



Approach bearing 062.7 DGR True



NATIONAL OCEANIC AND ATMOSPHERIC ADMINISTRATION, NATIONAL OCEAN SERVICE

EGANS CREEK / TIGER POINT MARINA
2006 .5M USGS IMAGERY WITH BATHY

This Chartlet has been corrected through Notice to Mariners 00
NOT FOR NAVIGATION

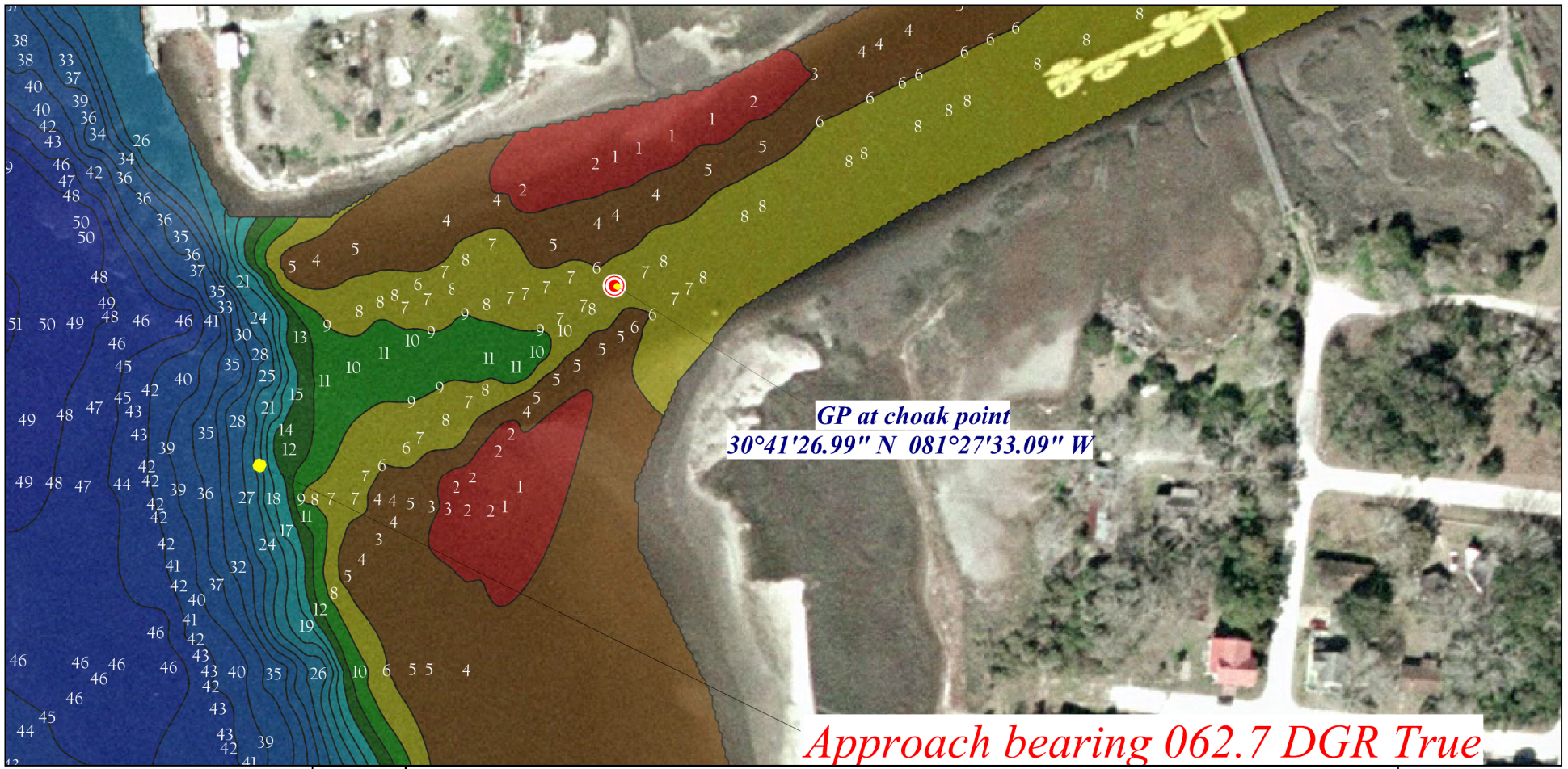
HYDROGRAPHIC SURVEY: EGANS CRK
PROJECT: S-G904-NRT2-10
FIELD SHEET NUMBER: SPECIAL
STATE: FLORIDA
LOCALITY: FERNANDINA BEACH
SUB-LOCALITY: EGANS CREEK

HORIZONTAL DATUM: NAD83
SOUNDING DATUM : MEAN LOWER
SOUNDING UNITS: FEET
SURVEY SCALE: 00
TIDE QUALITY: VERIFIED

CHARTLET VISIBLE AREA
CENTER LATITUDE: 30/41/26.52 N
CENTER LONGITUDE: 81/27/15.84 W
PLOT SCALE: 1: 4863
1 in = 124 m

SURVEYED BY
AA NRT-2 (N/CS53X2)
RAMSEY JR
LEAD HYDROGRAPHER
DATE :/15/2011 TO /15/2011

SIGNED:
DATE:



NATIONAL OCEANIC AND ATMOSPHERIC ADMINISTRATION, NATIONAL OCEAN SERVICE

EGANS CREEK / TIGER POINT MARINA
2006 .5M USGS IMAGERY WITH BATHY

This Chartlet has been corrected through Notice to Mariners 00
NOT FOR NAVIGATION

HYDROGRAPHIC SURVEY: EGANS CRK
PROJECT: S-G904-NRT2-10
FIELD SHEET NUMBER: SPECIAL
STATE: FLORIDA
LOCALITY: FERNANDINA BEACH
SUB-LOCALITY: EGANS CREEK

HORIZONTAL DATUM: NAD83
SOUNDING DATUM : MEAN LOWER
SOUNDING UNITS: FEET
SURVEY SCALE: 00
TIDE QUALITY: VERIFIED

CHARTLET VISIBLE AREA
CENTER LATITUDE: 30/41/25.80 N
CENTER LONGITUDE: 81/27/27.36 W
PLOT SCALE: 1: 2126
1 in = 54 m

SURVEYED BY
AA NRT-2 (N/CS53X2)
RAMSEY JR
LEAD HYDROGRAPHER
DATE :/15/2011 TO /15/2011

SIGNED:
DATE: